



Featured hike: Hocomocco to Mill Pond

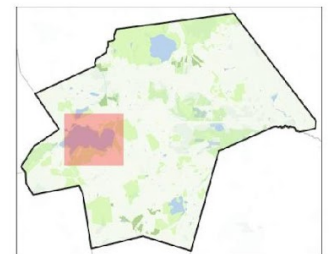


Distance: 3.8 miles one way or 7.6 there and back

Parking: Mill Pond School

Trail mild hills, some areas of roots and rocks, some boardwalk

Notes: Did you know you could hike all the way from the Westborough Train Station to Mill Pond School? Look for swans in both Mill Pond and Hocomocco Pond



- Featured Hike
- Other trails
- Trail follows road
- 10 foot contours
- Water
- WCLT Property
- Other protected
- Wetland
- Parking
- Kiosk

Source data obtained from the Office of Geographic Information Systems (Mass GIS), Open Street Maps (OSM), and global positioning systems (GPS). Boundaries are approximate. Map produced by Westborough Community Land Trust, 2022.